

Stainless Steel Cantilever Arms - CLA-A4 & CLA-S-A4 Range

SKU: CLA-A4 / CLA-S-A4 | P2663 Type | Category: Stainless Steel Range - Cantilever Arms

These A4 stainless steel cantilever arms are designed for mounting directly onto 41mm strut-compatible channel to provide horizontal projection brackets for cable tray, cable basket, pipework, and general building services. Each arm features a 130 x 45 x 8mm stainless steel back plate with two fixing holes at 41.25mm centres, and is available in unslotted and slotted arm profiles across live stocked projection lengths from 200mm to 900mm. The 41 x 41mm channel arm section has a 2.5mm wall thickness and incorporates a return-lip end plate for rigidity. The A4 stainless steel construction provides strong corrosion resistance for internal, external, and demanding service environments.

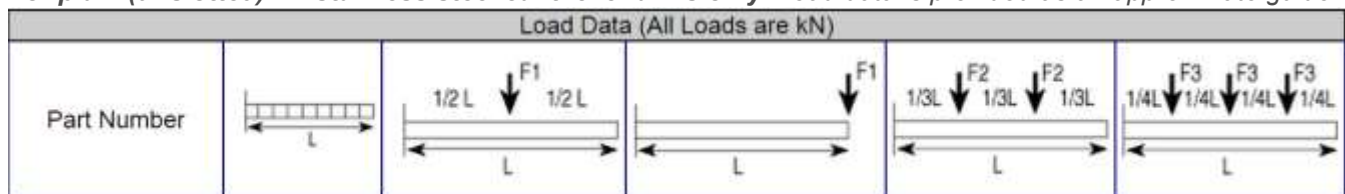
SPECIFICATION	
Material	A4 Stainless Steel
Finish	A4 Stainless Steel
Back Plate	130mm (H) x 45mm (W) x 8mm (thk)
Back Plate Width	46.4mm overall
Hole Centres	41.25mm spacing
Hole Diameter	Dia. 14mm nominal
Arm Profile	41 x 41mm channel section
Wall Thickness	2.5mm
Arm Lengths	200 to 900mm
Types	Unslotted (CLA...-A4) / Slotted (CLA...S-A4)

KEY FEATURES

- A4 stainless steel construction for strong corrosion resistance in internal, external, and demanding service environments
- 130 x 45 x 8mm stainless steel back plate with two fixing holes at 41.25mm centres for secure wall mounting
- Available in unslotted and slotted arm variants across the live stocked stainless steel range
- 41 x 41mm channel arm section with 2.5mm wall thickness and return-lip end plate for rigidity
- Arm projections from 200mm to 900mm to suit a wide range of cable tray, basket, and pipework support needs
- Compatible with 41mm strut channel systems, channel nuts, and related support accessories

LOAD RATING - CANTILEVER ARM

For plain (unslotted) A4 stainless steel cantilever arms only. Load data is provided as an approximate guide

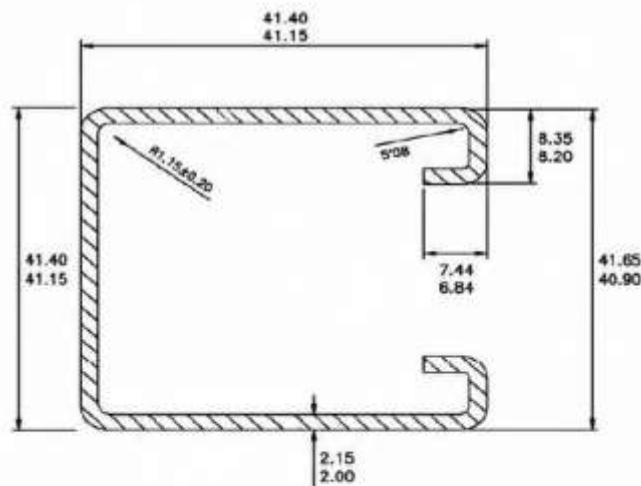
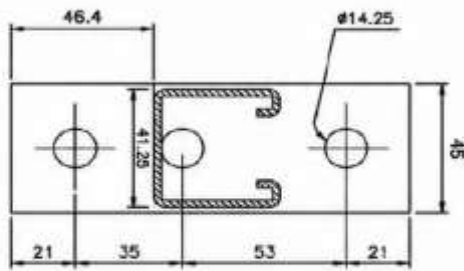
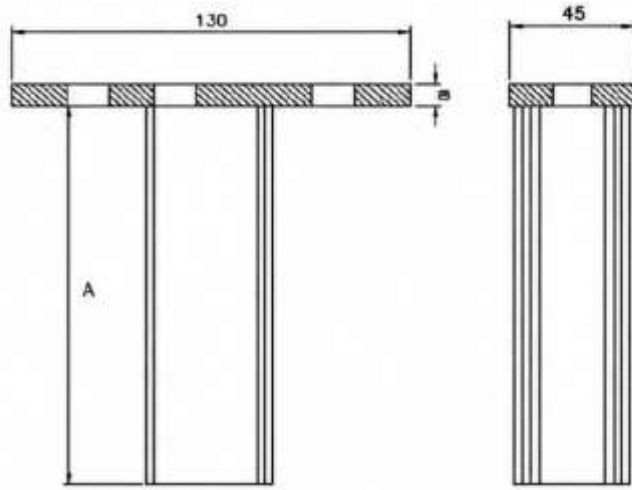


only and should not be solely relied upon for structural design. Values are indicative based on typical loading conditions. All load-bearing applications must be verified by a qualified structural or project engineer. Load ratings for slotted arms are not published - please contact us for guidance. All loads are kN.

Part Number	Arm Length	F1 at 1/2L	F1 at L	2 x F2	3 x F3
CLA200-A4	200mm	3.67	1.83	1.83	1.22
CLA300-A4	300mm	2.44	1.22	1.22	0.81
CLA450-A4	450mm	1.63	0.81	0.81	0.54
CLA600-A4	600mm	1.22	0.60	0.60	0.40
CLA750-A4	750mm	0.97	0.48	0.48	0.32
CLA900-A4	900mm	0.81	0.40	0.40	0.27

ENGINEERING DRAWING - CANTILEVER ARM

MATERIAL: A4 STAINLESS STEEL



A"	DIM.
200	PARAMETERS
300	
450	
600	
750	
900	

TOLERANCE
 DIMS. - U.N.O
 - ±1mm
 ANGLES - ±0.5°

KEY DIMENSIONS

Component	Dimension	Note
Back Plate Height	130mm	Overall plate height
Back Plate Width	45mm (46.4mm o/a)	Nominal width / overall
Back Plate Thickness	8mm	A4 stainless steel plate
Fixing Hole Diameter	Dia. 14mm	Both holes
Hole Centres	41.25mm	Vertical spacing
Hole Position (edge)	21mm from each side	Horizontal centring
Arm Profile	41 x 41mm	Channel section (nom. 41x41)
Arm Wall Thickness	2.5mm (+0/-1mm)	As per drawing tolerance
End Plate Height	40.80mm	Return lip / end cap
Arm Projection (Dim. A)	200, 300, 450, 600, 750, 900mm	Unslotted range; slotted range currently 200-750mm
Tolerance (Dims.)	+/- 1mm	Unless otherwise specified
Tolerance (Angles)	+/- 0.5 deg	Unless otherwise specified

AVAILABLE SIZES / PRODUCT RANGE

Part No. / SKU	Product Title	Type	Arm Length	Finish
CLA200-A4	200mm Cantilever Arms - A4 Stainless	Unslotted	200mm	A4 Stainless
CLA200S-A4	200mm Slotted Cantilever Arms - A4 Stainless	Slotted	200mm	A4 Stainless
CLA300-A4	300mm Cantilever Arms - A4 Stainless	Unslotted	300mm	A4 Stainless
CLA300S-A4	300mm Slotted Cantilever Arms - A4 Stainless	Slotted	300mm	A4 Stainless
CLA450-A4	450mm Cantilever Arms - A4 Stainless	Unslotted	450mm	A4 Stainless
CLA450S-A4	450mm Slotted Cantilever Arms - A4 Stainless	Slotted	450mm	A4 Stainless
CLA600-A4	600mm Cantilever Arms - A4 Stainless	Unslotted	600mm	A4 Stainless
CLA600S-A4	600mm Slotted Cantilever Arms - A4 Stainless	Slotted	600mm	A4 Stainless
CLA750-A4	750mm Cantilever Arms - A4 Stainless	Unslotted	750mm	A4 Stainless
CLA750S-A4	750mm Slotted Cantilever Arms - A4 Stainless	Slotted	750mm	A4 Stainless
CLA900-A4	900mm Cantilever Arms - A4 Stainless	Unslotted	900mm	A4 Stainless

TYPICAL APPLICATIONS

Cable tray and cable basket horizontal support	Data centre and server room cable management
Pipework support in HVAC and M&E installations	Industrial framing and mechanical services support
Strut channel wall bracket and projection arm	Stainless steel installations requiring enhanced corrosion resistance

To Order: Visit directchannel.uk.com or call 0121 270 8507. Bulk / trade pricing: sales@directchannel.uk.com. Most orders dispatched within 24 hours.

DISCLAIMER

Direct Channel Support Systems Ltd has made every reasonable effort to ensure the accuracy and completeness of the information contained in this datasheet. However, all product specifications, dimensions, load data, finishes, pricing, and other technical details are provided for guidance purposes only. Direct Channel Support Systems Ltd reserves the right to alter, update, or withdraw any product, specification, price, or technical information at any time and without prior notice. To the fullest extent permitted by law, Direct Channel Support Systems Ltd accepts no liability for any loss, damage, injury, or consequential loss arising from reliance on the information contained herein. Customers are advised to verify all specifications prior to ordering. For the most current product information visit directchannel.uk.com or contact our sales team.