

Plain Channel Nut – Hot Dip Galvanised

Plain Channel Nut | Mild Steel | Hot Dip Galvanised | M6 – M16 | Fits 41mm Channel

Direct Channel Plain Channel Nuts drop into strut channel to provide a threaded fixing point anywhere along the run. The serrated top edges bite into the channel return lips to hold the nut securely in position while the bolt is fitted.

Manufactured from mild steel and Hot Dip Galvanised (HDG) for outdoor and corrosive environments, the thread is oversize tapped to clear the galvanised coating. Suits all common 41mm strut and Unistrut-type channel; supplied in boxes of 100 (M16 sold singly).

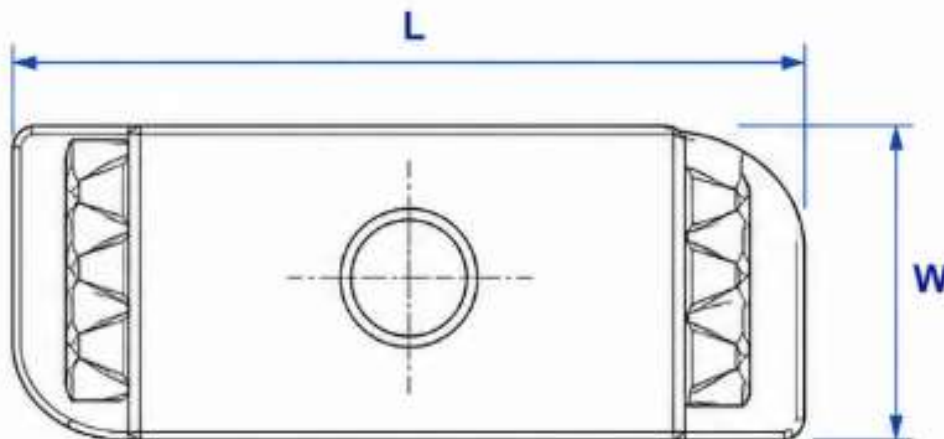
SPECIFICATION

Product Type	Plain channel nut (non-spring)
Material	Mild steel
Finish	Hot Dip Galvanised (HDG), oversize tapped
Thread	Metric coarse, M6 – M16
Length (L)	35 mm (nominal)
Width (W)	19 mm (nominal)
Body Height (C)	6 mm (M6–M8) / 8 mm (M10–M16)
Top Face	Serrated to grip channel lips
Compatibility	Fits all 41mm strut / Unistrut-type channel
Use	Threaded fixing point in channel — external / corrosive
Pack	Box of 100 (M16 sold singly)
Supply	Boxed / single

KEY FEATURES

<ul style="list-style-type: none"> • Hot Dip Galvanised for outdoor / corrosive use • Plain (non-spring) channel nut • Metric coarse thread M6 to M16 • Standard 35 × 19 mm footprint 	<ul style="list-style-type: none"> • Serrated top grips the channel return lips • Thread oversize tapped to clear the coating • Fits all 41mm / Unistrut-type channel • Boxed in 100s (M16 sold singly)
---	---

TECHNICAL DRAWING



Plain channel nut — plan and elevation, dimensions not to scale

AVAILABLE SIZES

Size	Length (mm)	Width (mm)	Height (mm)	Pack	Code
M6	35	19	6	100	CNP6G
M8	35	19	6	100	CNP8G
M10	35	19	8	100	CNP10G
M12	35	19	8	100	CNP12G
M16	35	19	8	1	CNP16G.Q1

Length and width are nominal (35 × 19 mm footprint to suit 41mm channel); body height is 6 mm for M6–M8 and 8 mm for M10–M16. Hot Dip Galvanised and oversize tapped to clear the coating. The '.Q1' suffix denotes the single-piece (x1) website variant. Finish: Hot Dip Galvanised (HDG).

TYPICAL APPLICATIONS

Strut and channel framework fixings	Cable tray and basket support
Pipe and duct support brackets	HVAC and mechanical services
Electrical containment systems	General mounting and bracketry

To Order: Visit directchannel.uk.com or call **0121 270 8507** | Trade & bulk enquiries: sales@directchannel.uk.com | Most orders dispatched same or next working day.

DISCLAIMER & LEGAL NOTICE

Direct Channel Support Systems Ltd has made every reasonable effort to ensure the accuracy and completeness of the information contained in this datasheet. All product specifications, dimensions, and technical details are provided for guidance purposes only. Direct Channel Support Systems Ltd reserves the right to alter, update, or withdraw any product or specification at any time and without prior notice. To the fullest extent permitted by law, Direct Channel Support Systems Ltd accepts no liability for any loss, damage, or consequential loss arising from reliance on the information contained herein. Customers are advised to verify all specifications prior to ordering. For the most current product information visit directchannel.uk.com or contact our sales team.