

Plain Channel Nut – A4 Stainless Steel

Plain Channel Nut | A4 / AISI 316 Stainless | Marine Grade | M6 – M12 | Fits 41mm Channel

Direct Channel Plain Channel Nuts drop into strut channel to provide a threaded fixing point anywhere along the run. The serrated top edges bite into the channel return lips to hold the nut securely in position while the bolt is fitted.

Manufactured from A4 / AISI 316 austenitic stainless steel for excellent corrosion resistance in marine, external and chemically aggressive environments. Suits all common 41mm strut and Unistrut-type channel; sold individually.

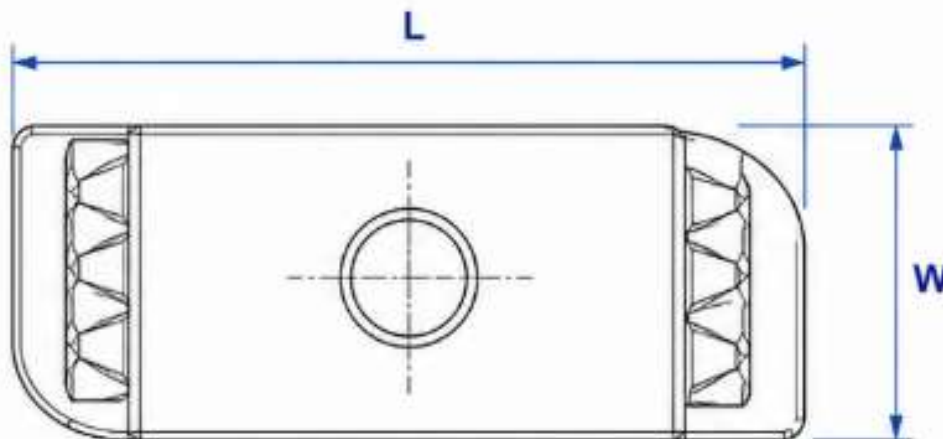
SPECIFICATION

Product Type	Plain channel nut (non-spring)
Material	A4 / AISI 316 stainless steel
Finish	Plain (self-finish) stainless
Thread	Metric coarse, M6 – M12
Length (L)	35 mm (nominal)
Width (W)	19 mm (nominal)
Body Height (C)	6 mm (M6–M8) / 8 mm (M10–M12)
Top Face	Serrated to grip channel lips
Compatibility	Fits all 41mm strut / Unistrut-type channel
Use	Threaded fixing point — marine / corrosive
Corrosion	Marine-grade A4 (AISI 316)
Supply	Sold individually

KEY FEATURES

<ul style="list-style-type: none"> • A4 / AISI 316 stainless — marine-grade corrosion resistance • Plain (non-spring) channel nut • Metric coarse thread M6 to M12 • Standard 35 × 19 mm footprint 	<ul style="list-style-type: none"> • Serrated top grips the channel return lips • Suitable for external and marine use • Fits all 41mm / Unistrut-type channel • Sold individually
--	--

TECHNICAL DRAWING



Plain channel nut — plan and elevation, dimensions not to scale

AVAILABLE SIZES

Size	Length (mm)	Width (mm)	Height (mm)	Pack	Code
M6	35	19	6	1	CNP6A4
M8	35	19	6	1	CNP8A4
M10	35	19	8	1	CNP10A4
M12	35	19	8	1	CNP12A4

Length and width are nominal (35 × 19 mm footprint to suit 41mm channel); body height is 6 mm for M6–M8 and 8 mm for M10–M12. Material is A4 / AISI 316 austenitic stainless steel. Finish: plain (self-finish) stainless.

TYPICAL APPLICATIONS

Strut and channel framework fixings	Cable tray and basket support
Pipe and duct support brackets	HVAC and mechanical services
Electrical containment systems	General mounting and bracketry

To Order: Visit directchannel.uk.com or call **0121 270 8507** | Trade & bulk enquiries: sales@directchannel.uk.com | Most orders dispatched same or next working day.

DISCLAIMER & LEGAL NOTICE

Direct Channel Support Systems Ltd has made every reasonable effort to ensure the accuracy and completeness of the information contained in this datasheet. All product specifications, dimensions, and technical details are provided for guidance purposes only. Direct Channel Support Systems Ltd reserves the right to alter, update, or withdraw any product or specification at any time and without prior notice. To the fullest extent permitted by law, Direct Channel Support Systems Ltd accepts no liability for any loss, damage, or consequential loss arising from reliance on the information contained herein. Customers are advised to verify all specifications prior to ordering. For the most current product information visit directchannel.uk.com or contact our sales team.