

Hex Full Nut (DIN 934)

Hexagon Full Nut | Class 8 / A4-70 | Zinc · HDG · A4 Stainless | M6 – M24 | Metric Coarse

Direct Channel Hex Full Nuts are the traditional hexagon nut used for general bolting and fastening across structural, mechanical and building-services work. Manufactured to DIN 934 (ISO 4032) with a 60° metric coarse thread.

Available in self-colour / Bright Zinc Plated steel, Hot Dip Galvanised steel (class 8 to DIN 267-4) and A4 / AISI 316 austenitic stainless steel for corrosion resistance.

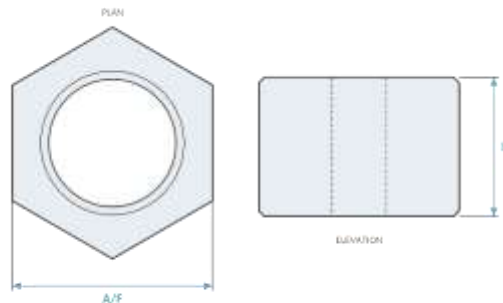
SPECIFICATION

Product Type	Hexagon full nut
Standard	DIN 934 / ISO 4032
Property Class	Steel class 8 (DIN 267-4); stainless A4-70 (A316)
Material	Carbon steel (class 8) or A4 / AISI 316 stainless steel
Thread	Metric coarse, 60° ISO
Finishes	Bright Zinc Plated, Hot Dip Galvanised, A4 stainless
Size Range	M6 – M24
Width A/F	10 – 36 mm
Height	5 – 19 mm
Thread Pitch	1.0 – 3.0 mm (coarse)
Use	General bolting and fastening

KEY FEATURES

<ul style="list-style-type: none"> • Conforms to DIN 934 / ISO 4032 • Class 8 steel to DIN 267-4 • Full size range M6 to M24 • For general bolting and fastening 	<ul style="list-style-type: none"> • Three finishes: BZP zinc, HDG and A4 stainless • Metric coarse 60° ISO thread • A4 stainless for corrosion resistance
--	---

TECHNICAL DRAWING



Hex full nut — plan and elevation, dimensions not to scale

AVAILABLE SIZES

Size	Pitch (mm)	A/F (mm)	Height (mm)	BZP Code	HDG Code	A4 Code
M6	1.0	10	5.0	HNM6	HNM6G	HNM6-A4
M8	1.25	13	6.5	HNM8	HNM8G	HNM8-A4
M10	1.5	17	8.0	HNM10	HNM10G	HNM10-A4
M12	1.75	19	10.0	HNM12	HNM12G	HNM12-A4
M16	2.0	24	13.0	HNM16.Q1	HNM16G.Q1	HNM16-A4.Q1
M20	2.5	30	16.0	HNM20.Q1	HNM20G.Q1	HNM20-A4.Q1
M24	3.0	36	19.0	HNM24.Q1	HNM24G.Q1	HNM24-A4.Q1

Dimensions are nominal to DIN 934. Steel nuts are class 8 to DIN 267-4 (800 MPa proof stress); A4 stainless is A4-70 (AISI 316) to ISO 3506-2. Zinc = ZP / Cr3 (BZP); HDG = hot dip galvanised; A4 = plain stainless. The '.Q1' suffix denotes the website pack/price variant code.

TYPICAL APPLICATIONS

Structural steelwork and bolted connections	HVAC and mechanical services
Strut, channel and bracketry assemblies	General fabrication and maintenance
Plant, machinery and equipment mounting	Construction, agricultural and automotive

To Order: Visit directchannel.uk.com or call **0121 270 8507** | Trade & bulk enquiries: sales@directchannel.uk.com | Most orders dispatched same or next working day.

DISCLAIMER & LEGAL NOTICE

Direct Channel Support Systems Ltd has made every reasonable effort to ensure the accuracy and completeness of the information contained in this datasheet. All product specifications, dimensions, and technical details are provided for guidance purposes only. Direct Channel Support Systems Ltd reserves the right to alter, update, or withdraw any product or specification at any time and without prior notice. To the fullest extent permitted by law, Direct Channel Support Systems Ltd accepts no liability for any loss, damage, or consequential loss arising from reliance on the information contained herein. Customers are advised to verify all specifications prior to ordering. For the most current product information visit directchannel.uk.com or contact our sales team.