

Cantilever Arms — CLA & CLAS Range

SKU: CLA / CLAS | P2663 Type | Category: Strut Channel & Brackets — Cantilever Arms

These hot dip galvanised cantilever arms (P2663 type) are designed for mounting directly onto 41mm Unistrut-compatible strut channel to provide horizontal projection brackets for cable tray, cable basket, pipework, and general building services. Each arm features a 130 × 45 × 8mm mild steel back plate with two 14mm fixing holes at 41.25mm centres, and is available in unslotted or slotted arm profiles in seven projection lengths from 150mm to 1000mm. The 41 × 41mm channel arm section has a 2.5mm wall thickness and incorporates a return-lip end plate for rigidity. The hot dip galvanised finish meets BS EN ISO 1461 for long-term corrosion resistance, making these arms equally suitable for indoor and outdoor installations.

SPECIFICATION	
Material	Mild Steel
Finish	Hot Dip Galvanised (HDG)
Back Plate	130mm (H) × 45mm (W) × 8mm (thk)
Back Plate Width	46.4mm overall
Hole Centres	41.25mm spacing
Hole Diameter	14mm (Ø14)
Arm Profile	41 × 41mm channel section
Wall Thickness	2.5mm
Arm Lengths	150 to 1000mm
Types	Unslotted (CLA) / Slotted (CLAS)

KEY FEATURES

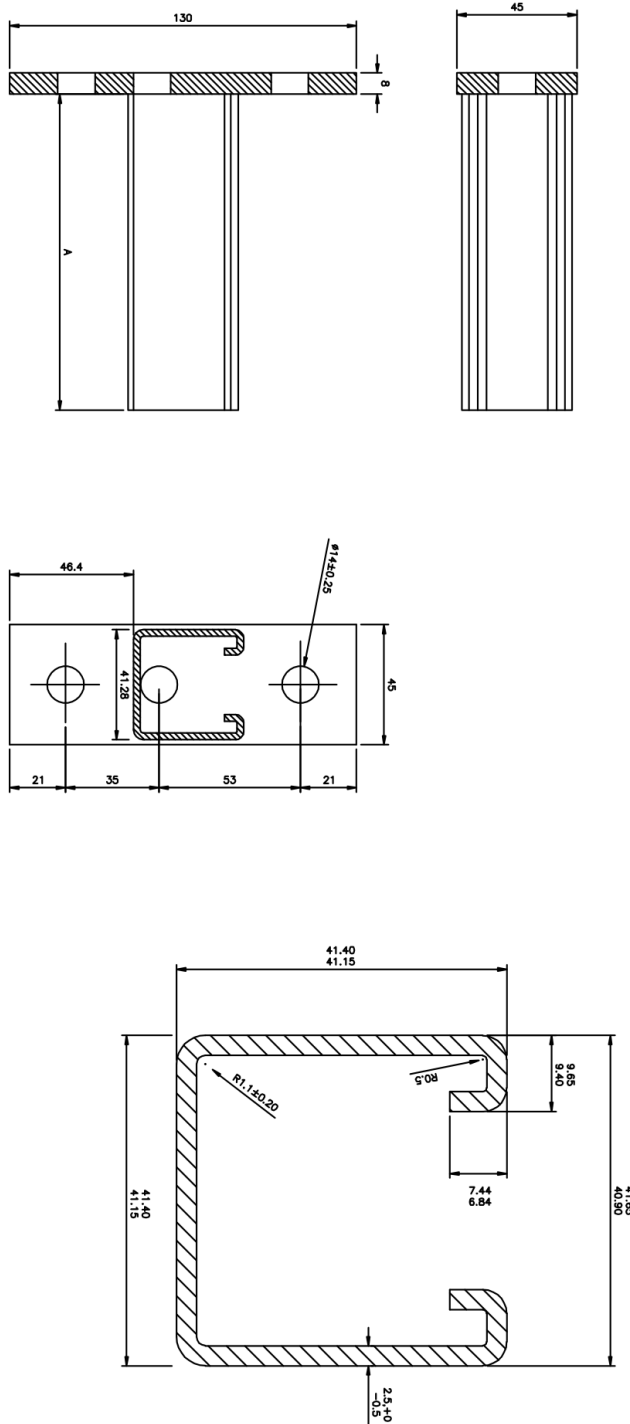
- Hot dip galvanised (HDG) finish to BS EN ISO 1461 — suitable for outdoor and corrosive environments
- 130 × 45 × 8mm mild steel back plate with two Ø14mm fixing holes at 41.25mm centres for secure wall mounting
- Available in unslotted (CLA) and slotted (CLAS) arm variants across 7 projection lengths
- 41 × 41mm channel arm section with 2.5mm wall thickness and return-lip end plate for rigidity
- Arm projections from 150mm to 1000mm — suits a wide range of cable tray, basket, and pipework support needs
- Fully compatible with all Unistrut P2663-type channel nuts, strut channel, and accessories

LOAD RATING — CANTILEVER ARM

Load Data (All Loads are kN)						
Part Number						
CLA150	150mm	4.89	2.44	2.44	1.63	
CLA300	300mm	2.44	1.22	1.22	0.81	
CLA450	450mm	1.63	0.81	0.81	0.54	
CLA600	600mm	1.22	0.60	0.60	0.40	
CLA750	750mm	0.97	0.48	0.48	0.32	
CLA900	900mm	0.81	0.40	0.40	0.27	

ENGINEERING DRAWING — CANTILEVER ARM

MATERIAL: MILD STEEL



DIM.	PARAMETERS						
"A"	150	300	450	600	750	900	1000

TOLERANCE - U.N.O
DIMS. - ±1mm
ANGLES - ±0.5°

KEY DIMENSIONS

Component	Dimension	Note
Back Plate Height	130mm	Overall plate height
Back Plate Width	45mm (46.4mm o/a)	Nominal width / overall
Back Plate Thickness	8mm	Mild steel plate
Fixing Hole Diameter	Ø14mm	Both holes
Hole Centres	41.25mm	Vertical spacing
Hole Position (edge)	21mm from each side	Horizontal centring
Arm Profile	41 × 41mm	Channel section (nom. 41×41)
Arm Wall Thickness	2.5mm (+0/-1mm)	As per drawing tolerance
End Plate Height	40.80mm	Return lip / end cap
Arm Projection (Dim. A)	150, 225, 300, 450, 600, 750, 900, 1000mm	Variable — see range table
Tolerance (Dims.)	±1mm	Unless otherwise specified
Tolerance (Angles)	±0.5°	Unless otherwise specified

AVAILABLE SIZES / PRODUCT RANGE

Part No. / SKU	Type	Arm Length	Back Plate	Finish	Weight (kg)
CLA150	Unslotted	150mm	130×45×8mm	HDG	0.76
CLA225	Unslotted	225mm	130×45×8mm	HDG	0.93
CLA300	Unslotted	300mm	130×45×8mm	HDG	1.15
CLA450	Unslotted	450mm	130×45×8mm	HDG	1.56
CLA600	Unslotted	600mm	130×45×8mm	HDG	1.97
CLA750	Unslotted	750mm	130×45×8mm	HDG	2.28
CLA900	Unslotted	900mm	130×45×8mm	HDG	2.74
CLA1000	Unslotted	1000mm	130×45×8mm	HDG	2.99
-	-	-	-	-	-
CLA300S	Slotted	300mm	130×45×8mm	HDG	1.12
CLA450S	Slotted	450mm	130×45×8mm	HDG	1.5
CLA600S	Slotted	600mm	130×45×8mm	HDG	1.81
CLA750S	Slotted	750mm	130×45×8mm	HDG	2.23
CLA900S	Slotted	900mm	130×45×8mm	HDG	2.57
CLA1000S	Slotted	1000mm	130×45×8mm	HDG	2.70

TYPICAL APPLICATIONS

Cable tray and cable basket horizontal support
 Pipework support in HVAC and M&E installations

Data centre and server room cable management
 Industrial framing and mechanical services support

Strut channel wall bracket and projection arm

Outdoor and corrosive environment installations (HDG)

COMPLIANCE & CERTIFICATIONS

Standard / Certification	Details
BS EN ISO 1461	Hot dip galvanised coatings on fabricated iron and steel articles
Unistrut P2663	Compatible with all Unistrut P2663-type cantilever arm accessories and channel systems

To Order: Visit directchannel.uk.com or call **0121 270 8507**. Bulk / trade pricing: sales@directchannel.uk.com. Most orders dispatched within 24 hours.

DISCLAIMER

Direct Channel Support Systems Ltd has made every reasonable effort to ensure the accuracy and completeness of the information contained in this datasheet. However, all product specifications, dimensions, load data, finishes, and other technical details are provided for guidance purposes only. Direct Channel Support Systems Ltd reserves the right to alter, update, or withdraw any product, specification, or technical information at any time and without prior notice. To the fullest extent permitted by law, Direct Channel Support Systems Ltd accepts no liability for any loss, damage, injury, or consequential loss arising from reliance on the information contained herein. Customers are advised to verify all specifications prior to ordering. For the most current product information visit directchannel.uk.com or contact our sales team.