

STAINLESS STEEL RANGE

PRODUCT CATALOGUE



0121 270 8507



SALES@DIRECTCHANNEL.UK.COM



DIRECT CHANNEL
SUPPORT SYSTEMS LIMITED

Stainless Steel Range

Direct Channel's Stainless Steel Range is built for high-performance installations in corrosive, hygienic, and outdoor environments. Manufactured from AISI 316/A4 grade stainless steel, these components offer exceptional resistance to rust and wear, making them ideal for use in marine, food-grade, pharmaceutical, and industrial applications.

This brochure covers our complete range of stainless steel fixings and support systems, including:

- **Strut Channel**
- **Channel Nuts & Washers**
- **Cantilever Arms & Bracketry**
- **Threaded Rods**
- **Hex Bolts, Nuts & Washers**
- **Flange Clamps, Cable Baskets & Ties**

Each product is precision-engineered to integrate seamlessly with our stainless steel strut system — ensuring strength, durability, and compliance across all your installations.

STRUT CHANNEL

PLAIN STAINLESS STEEL PROFILE: 41X21 MM	LENGTH	STAINLESS STEEL
	1 MM	CP21SS-1
	2 MM	CP21SS-2
	3 MM	CP21SS
	4 MM	CP21SS-4
	5 MM	CP21SS-5
	6 MM	CP21SS-6


PLAIN STAINLESS STEEL PROFILE: 41X41 MM	LENGTH	STAINLESS STEEL
	1 MM	CP41SS-1
	2 MM	CP41SS-2
	3 MM	CP41SS
	4 MM	CP41SS-4
	5 MM	CP41SS-5
	6 MM	CP41SS-6


STRUT CHANNEL

SLOTTED STAINLESS STEEL PROFILE: 41X21 MM		LENGTH	STAINLESS STEEL
		1 MM	CS21SS-1
		2 MM	CS21SS-2
		3 MM	CS21SS
		4 MM	CS21SS-4
		5 MM	CS21SS-5
		6 MM	CS21SS-6


SLOTTED STAINLESS STEEL PROFILE: 41X41 MM		LENGTH	STAINLESS STEEL
		1 MM	CS41SS-1
		2 MM	CS41SS-2
		3 MM	CS41SS
		4 MM	CS41SS-4
		5 MM	CS41SS-5
		6 MM	CS41SS-6

CHANNEL NUTS

PLAIN CHANNEL NUTS	THREAD SIZE	STAINLESS STEEL
	M6	CNP6A4
	M8	CNP8A4
	M10	CNP10A4
	M12	CNP12A4
	M16	CNP16A4


SHORT SPRING CHANNEL NUTS	THREAD SIZE	STAINLESS STEEL
	M6	CNS6A4
	M8	CNS8A4
	M10	CNS10A4
	M12	CNS12A4

CHANNEL NUTS

LONG SPRING CHANNEL NUTS	THREAD SIZE	BZP	HDG	STAINLESS STEEL
	M6	CNL6	CNL6G	CNL6A4
	M8	CNL8	CNL8G	CNL8A4
	M10	CNL10	CNL10G	CNL10A4
	M12	CNL12	CNL12G	CNL12A4

HAMMERHEAD STUD BOLT	THREAD SIZE	BZP	HDG	STAINLESS STEEL
	M6	CNS6	CNS6G	CNS6A4
	M8	CNS8	CNS8G	CNS8A4
	M10	CNS10	CNS10G	CNS10A4
	M12	CNS12	CNS12G	CNS12A4


CHANNEL NUTS

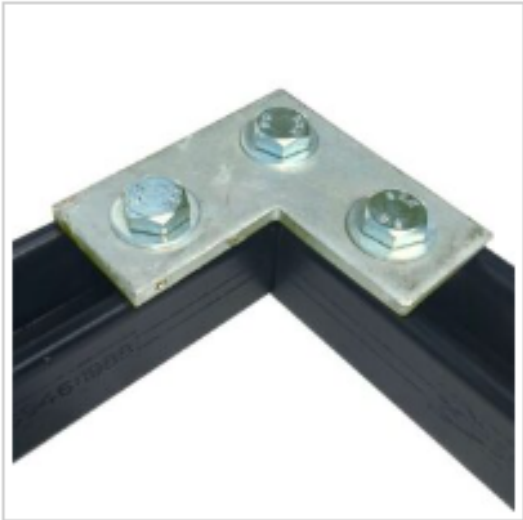
LONG SPRING CHANNEL NUTS	THREAD SIZE	BZP	HDG	STAINLESS STEEL
	M6	CNL6	CNL6G	CNL6A4
	M8	CNL8	CNL8G	CNL8A4
	M10	CNL10	CNL10G	CNL10A4
	M12	CNL12	CNL12G	CNL12A4

SQUARE PLATE WASHERS

SQUARE PLATE WASHER <u>THICKNESS 5MM</u>	THREAD SIZE	STAINLESS STEEL
	M6	SPW06-A4
	M8	SPW08-A4
	M10	SPW10-A4
	M12	SPW12-A4
	M16	-

BRACKETRY

Flat Plate	TYPE	STAINLESS STEEL
	2 HOLE	D02A4
	3 HOLE	D03A4
	4 HOLE	D04A4
	5 HOLE	D05A4



**90 DEGREE FLAT PLATE – A4
STAINLESS**


Code: D006A4



**FLAT TEE PLATE – A4
STAINLESS**

Code: D007A4

ANGLE BRACKET

90 DEGREE RIGHT ANGLE	TYPE	STAINLESS STEEL
	1X1 HOLE	D008A4
	2X1 HOLE	D011A4
	2X2 HOLE	D013A4
	3X1 HOLE	D014A4

TOP HAT U



21MM TOP HAT U BRACKET – A4 STAINLESS
Code: D029A4



41MM TOP HAT U BRACKET – A4 STAINLESS
Code: D030A4




82MM LONG TOP HAT U BRACKET – A4 STAINLESS
Code: D031A4



82MM TOP HAT WIDE U BRACKET – A4 STAINLESS
Code: D032A4

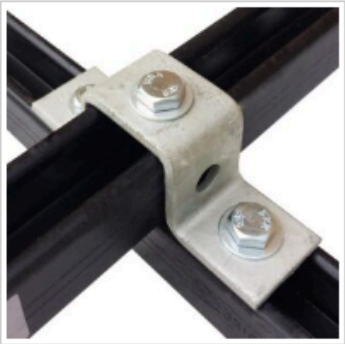
ANGLE BRACKET

90 DEGREE RIGHT ANGLE	TYPE	STAINLESS STEEL
	1X1 HOLE	D008A4
	2X1 HOLE	D011A4
	2X2 HOLE	D013A4
	3X1 HOLE	D014A4

TOP HAT U



21MM TOP HAT U BRACKET – A4 STAINLESS
Code: D029A4



41MM TOP HAT U BRACKET – A4 STAINLESS
Code: D030A4



82MM LONG TOP HAT U BRACKET – A4 STAINLESS
Code: D031A4



82MM TOP HAT WIDE U BRACKET – A4 STAINLESS
Code: D032A4

ANGLE BRACKET

45 DEGREE



CODE: D024A4

45 DEGREE ACUTE
ANGLE 1x1 HOLE



CODE: D022A4

OBTUSE ANGLE 45
DEGREE 1x1 HOLE

Z BRACKET



**21MM Z BRACKET – FOR
21MM CHANNEL – A4
STAINLESS**

[Code: D026A4](#)



**41MM Z BRACKET – FOR
41MM CHANNEL (A4
STAINLESS)**

[Code: D027A4](#)



**82MM Z BRACKET – FOR (2 X
41MM CHANNEL) – A4
STAINLESS**

[Code: D028A4](#)



CODE: D018A4

RIGHT ANGLE DELTA
PLATE 2x2 HOLE



CODE: D020A4

RIGHT
ANGLE
GUSSET 2x2 HOLE

BRACKETRY



Wing Bracket

2 WING TOWER BRACKET

Code: D039A4



Coupler

EXTERNAL COUPLER FOR 41X41MM CHANNEL

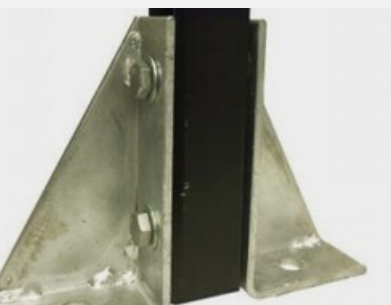
Code: D049A4



Base / Floor Plate

DOUBLE FIX BASE PLATE

Code: D035A4



Base / Floor Plate

SINGLE GUSSET BASE PLATE

Code: D037A4

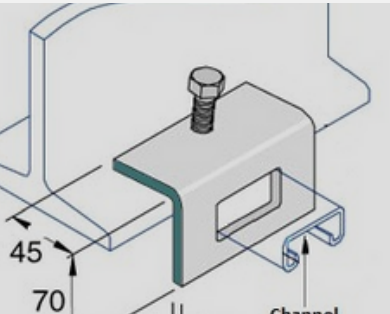


Base / Floor Plate

XL SINGLE CHANNEL BASE PLATE

Code: D070A4

Girder/Beam Clamp



WINDOW BRACKET

21MM Code: D047A4

41MM Code: D044A4

82MM Code: D048A4



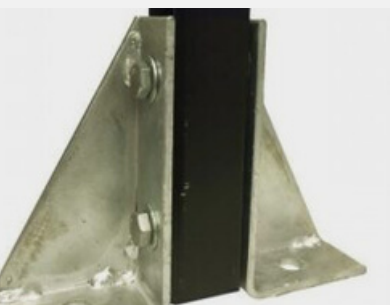
41MM BEAM CLAMP – M10 TAPPED HOLE

Code: D041A4



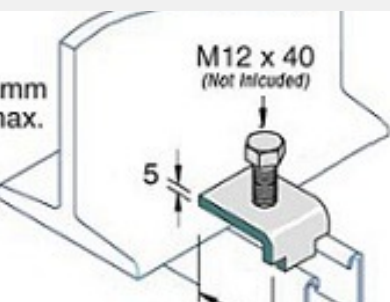
TAPPED BEAM CLAMP-A4 STAINLESS STEEL

Code: D042A4



41MM U BOLT & BRACKET STAINLESS STEEL

Code: D045A4



TOE BEAM CLAMP – A4 STAINLESS

Code: D040A4

CANTILEVER ARMS / TRAY & WIRE BRACKETS



PLAIN CANTILEVER ARMS

LENGTH	STAINLESS STEEL (A316/A4)
150 MM	-
200 MM	CLA200-A4
300 MM	CLA300-A4
450 MM	CLA450-A4
600 MM	CLA600-A4
750 MM	CLA750-A4
900 MM	CLA900-A4
1000 MM	-

CANTILEVER ARMS / TRAY & WIRE BRACKETS



SLOTTED CANTILEVER ARMS

LENGTH	STAINLESS STEEL (A316/A4)
150 MM	-
200 MM	CLA200S-A4
300 MM	CLA300S-A4
450 MM	CLA450S-A4
600 MM	CLA600S-A4
750 MM	CLA750S-A4
900 MM	CLA900S-A4
1000 MM	-

THREAD ROD



THREAD SIZE	LENGTH	(FINISH) A4 STEEL
M6	1 M 2 M 3 M	TR1-6A4 - TR3-6A4
M8	1 M 2 M 3 M	TR1-8A4 TR2-8A4 TR3-8A4
M10	1 M 2 M 3 M	TR1-10A4 TR2-10A4 TR3-10A4
M12	1 M 2 M 3 M	TR1-12A4 TR2-12A4 TR3-12A4
M16	1 M 2 M 3 M	TR1-16A4 TR2-16A4 TR3-16A4
M20	1 M 2 M 3 M	TR1-20A4 TR2-20A4 TR3-20A4
M24	1 M 2 M 3 M	TR1-24A4 TR2-24A4 TR3-24A4

HEX HEAD SCREWS

Kit Assembly Pack
(Bolt / Washer / Nut)




THREAD SIZE	LENGTH	(FINISH) A4 STAINLESS
M6	25MM	HNB625W-A4.Q50
	35 MM	HNB635W-A4.Q50
M8	25MM	HNB825W-A4.Q50
	35 MM	HNB835W-A4.Q50
M10	25MM	HNB1025W-A4.Q50
	35 MM	HNB1035W-A4.Q50
M12	25MM	HNB1225W-A4.Q50
	35 MM	HNB1235W-A4.Q50


HEX HEAD BOLT



THREAD SIZE	LENGTH	STAINLESS STEEL
M6	16MM BOLT 20MM BOLT 25MM BOLT 30MM BOLT 35MM BOLT 40MM BOLT 50 MM BOLT	- - HB625BA4.Q1 - HB635BA4.Q1 - -
M8	16MM BOLT 20MM BOLT 25MM BOLT 30MM BOLT 35MM BOLT 40MM BOLT 50 MM BOLT	- - HB825BA4.Q1 - HB835BA4.Q1 - -
M10	16MM BOLT 20MM BOLT 25MM BOLT 30MM BOLT 35MM BOLT 40MM BOLT 50 MM BOLT	- - HB1025BA4.Q1 - HB1035BA4.Q1 - -
M12	16MM BOLT 20MM BOLT 25MM BOLT 30MM BOLT 35MM BOLT 40MM BOLT 50 MM BOLT	- - HB1225BA4.Q1 - HB1235BA4.Q1 - -

HEX HEAD FULL NUTS	THREAD SIZE	STAINLESS STEEL
	M6	HNМ6-A4
	M8	HNМ8-A4
	M10	HNМ10-A4
	M12	HNМ12-A4
	M16	HNМ16-A4.Q1
	M20	HNМ20-A4.Q1
	M24	HNМ24-A4.Q1


PENNY WASHERS	THREAD SIZE	STAINLESS STEEL
	M6	PWM625-A4
	M8	PWM825-A4
	M10	PWM1025-A4
	M12	PWM1225-A4
	M16	PWM16-A4.Q1

SPRING WASHERS	THREAD SIZE	STAINLESS STEEL A4
	M8	PSW8-A4
	M10	PSW10-A4



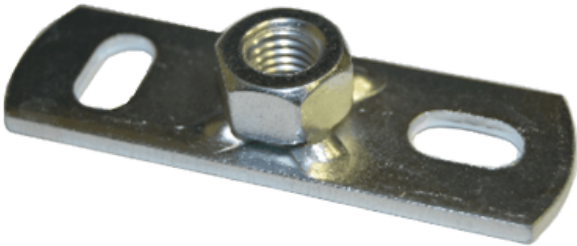
STAINLESS STEEL (A316/A4)

THREAD SIZE	PRODUCT CODE
M8	FLM08-A4
M10	FLM10-A4
M16	FLM16-A4

ROOFING BOLTS	THREAD SIZE LENGTH	STAINLESS STEEL A4
	M6 X 12MM	PNB612A2
	M6 X 16MM	PNB616A2
	M6 X 20MM	PNB620A2

BACK PLATES

STAINLESS STEEL (A316/A4) FINISH



THREAD SIZE	PRODUCT CODE
M6	BP06A4
M8	BP08A4
M10	BP10A4

ROD CONNECTORS



THREADED ROD CONNECTOR

THREAD SIZE	STAINLESS STEEL A4
M6	RCM6-A4
M8	RCM8-A4
M10	RCM10-A4
M12	RCM12-A4
M16	RCM16-A4
M20	RCM20-A4
M24	RC24-A4

CABLE TIES

SALES@DIRECTCHANNEL.UK.COM
01212708507



Code: T200A4

**200MM CABLE TIES X 100 (A4
STAINLESS)**



Code: T300A4

**300MM X 4.6MM CABLE TIES X 100 (A4
STAINLESS)**



Code: T360A4

**360MM CABLE TIES X 100 (A4
STAINLESS)**



**Units 34 / 35, Bridge Road, Great
Bridge Industrial Estate, Great Bridge,
Tipton, West Midlands, DY4 0HR**